

# BB - 21 - Reinstallation - EN



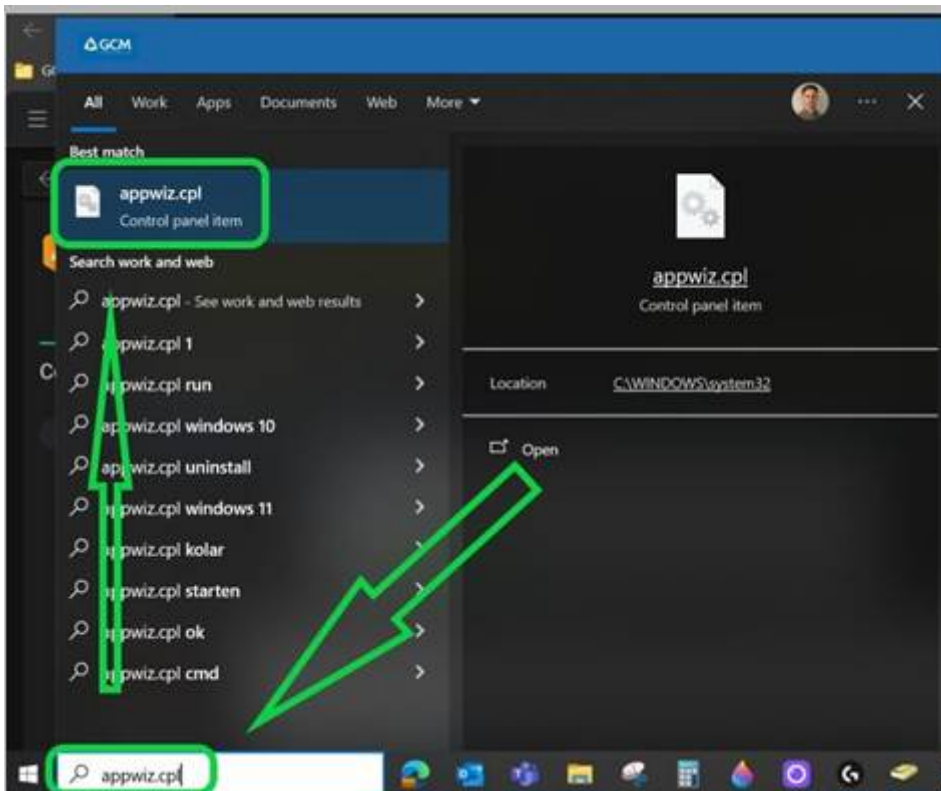
## Object: Reinstalling Bluebeam Revu 21

### Description

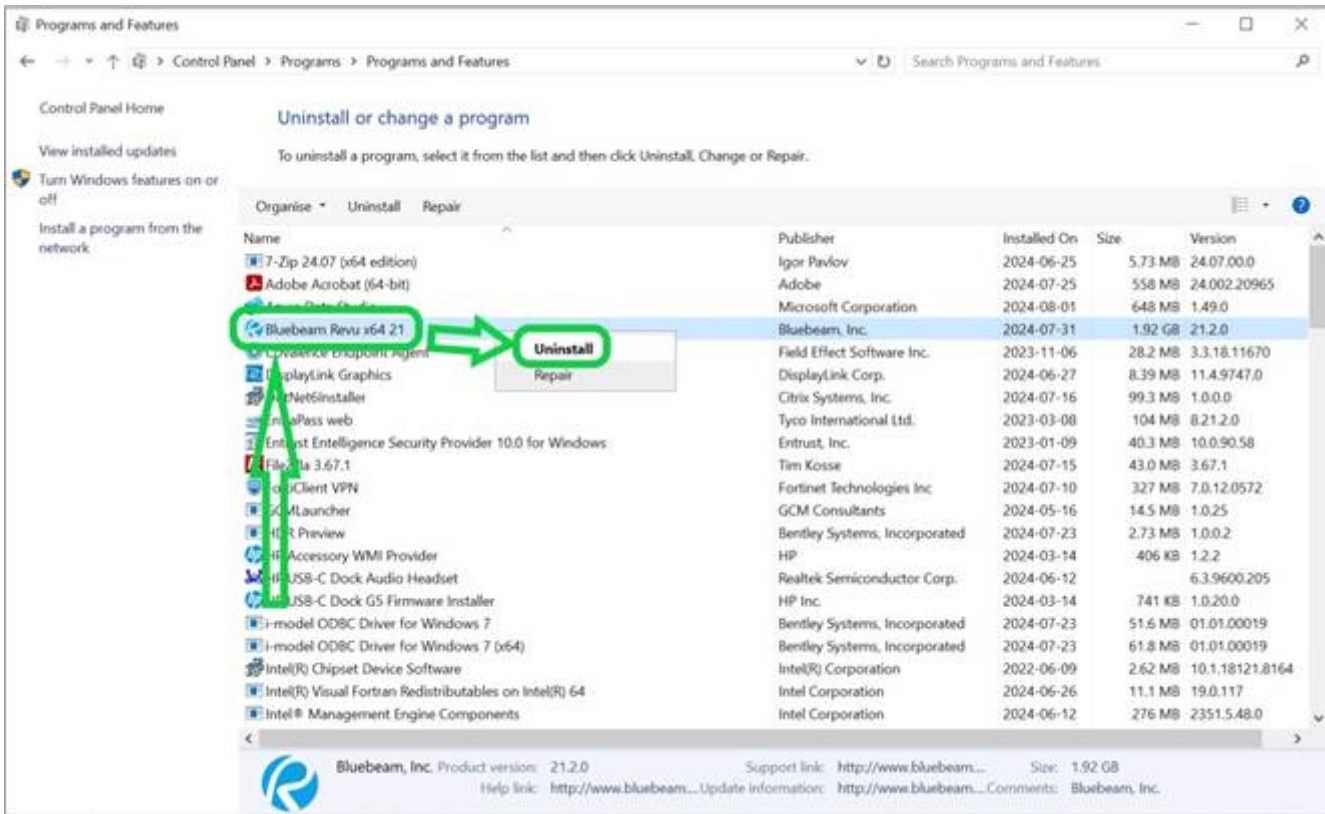
This procedure explains how to uninstall your current version of Bluebeam and reinstall version 21.

### Steps

1. Search for and open `appwiz.cpl`.



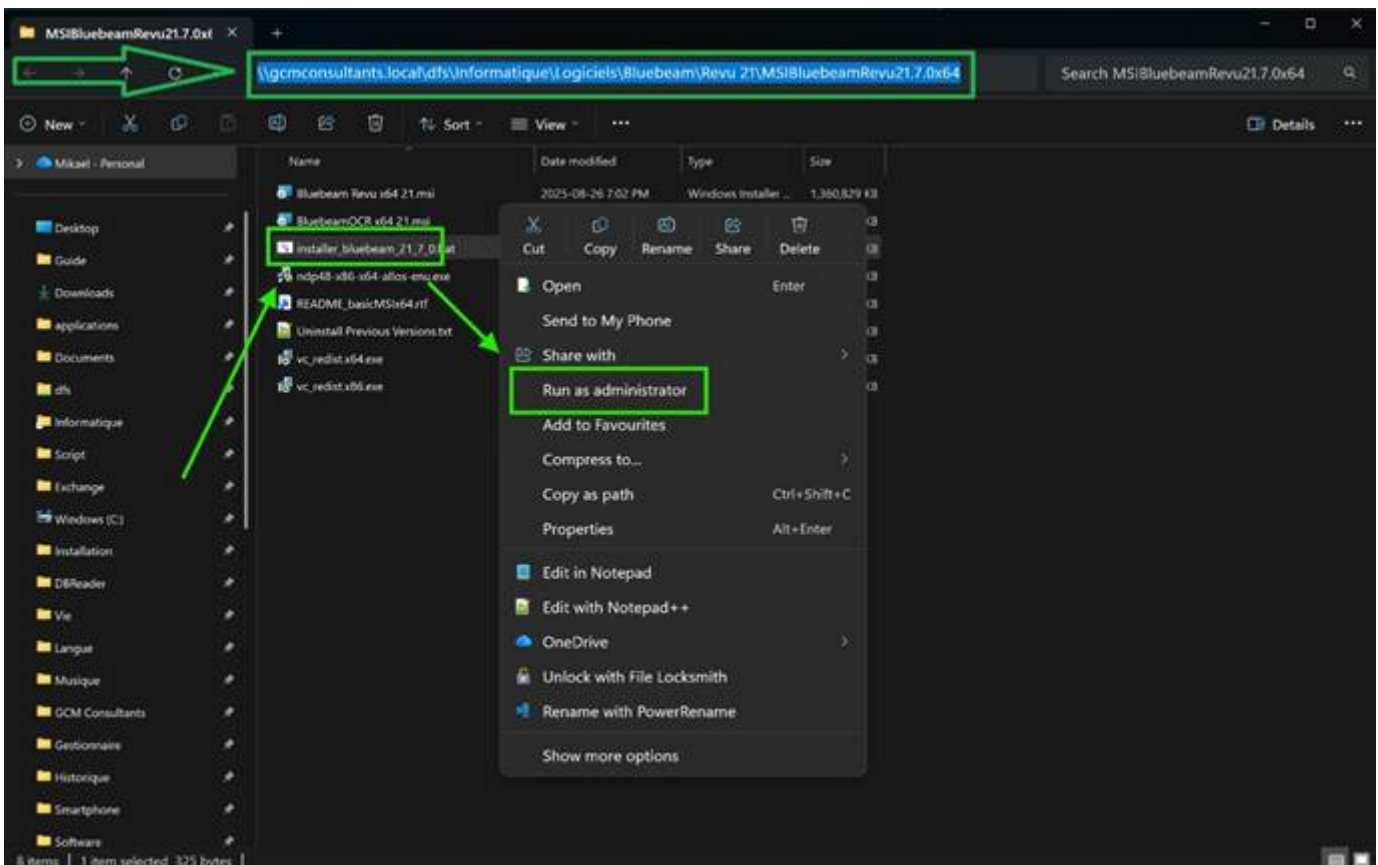
2. Uninstall Bluebeam from the list of programs and restart your computer.



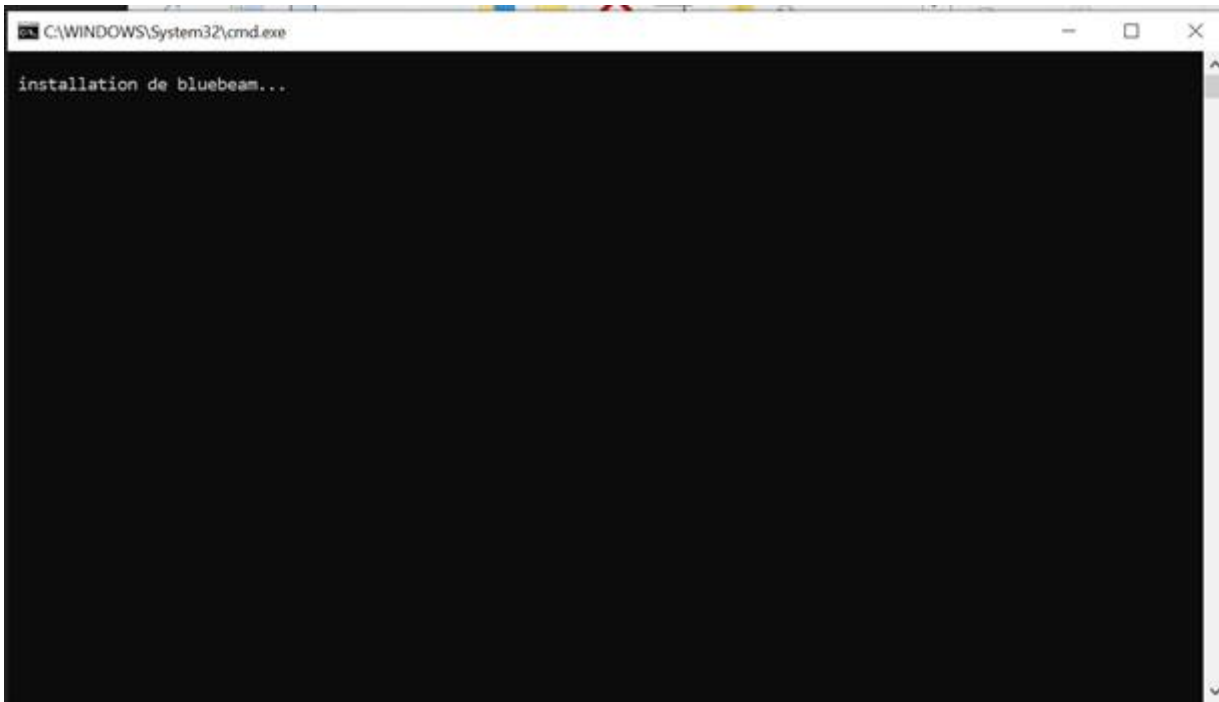
3. Copy the path below and paste it into the File Explorer address bar, then press Enter:

`\\gcmconsultants.local\dfs\Informatique\Logiciels\Bluebeam\Revu 21`

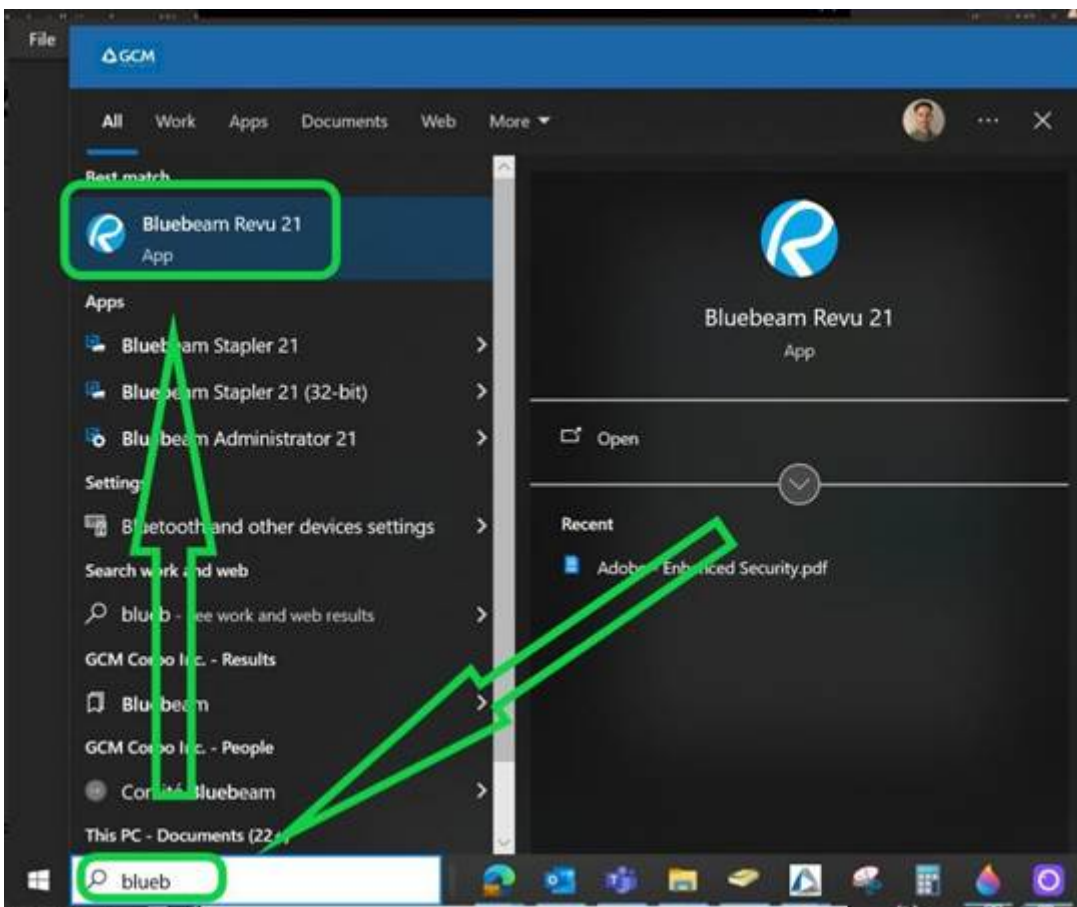
4. Right-click the `MSI\BluebeamRevu21.8.0x64` file and select "Run as administrator".



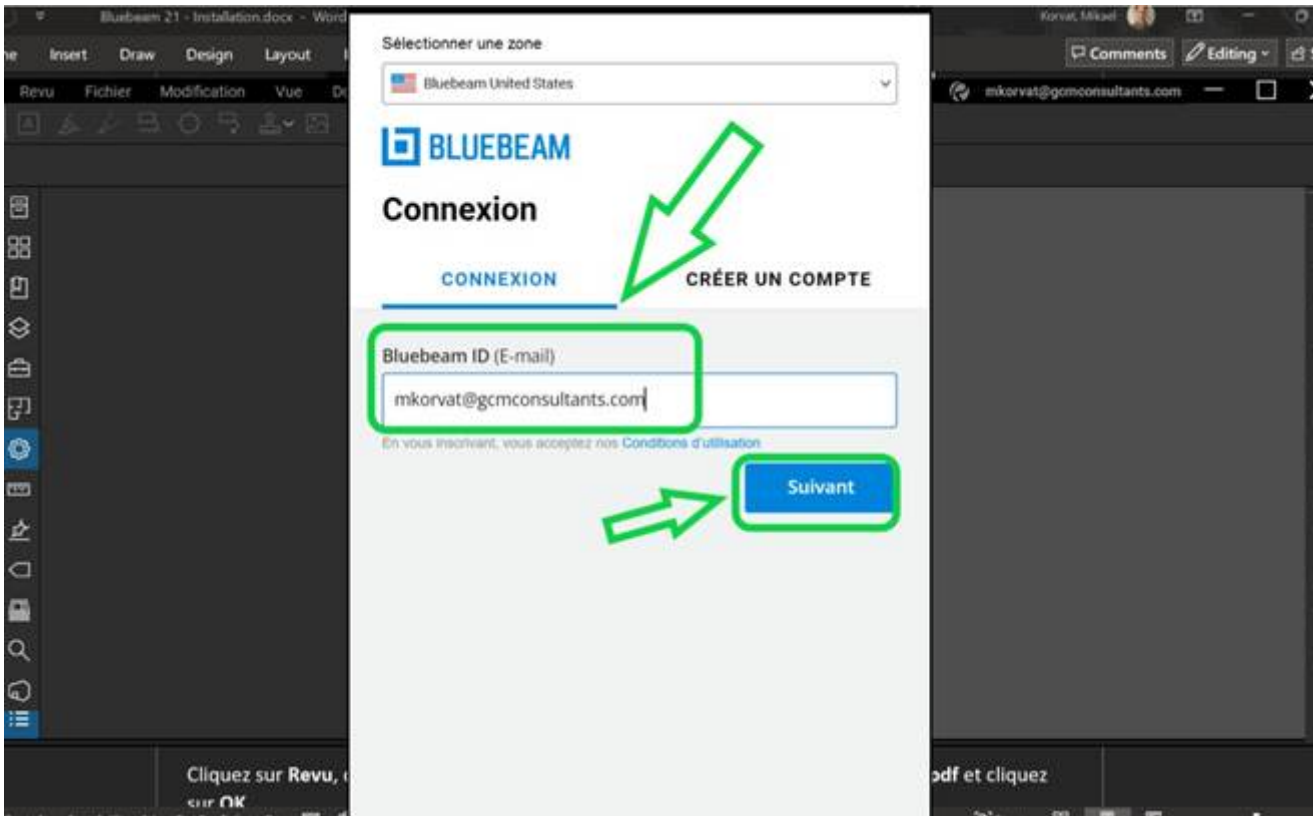
5. Wait for the installation to complete, which may take 2 to 5 minutes.



6. Launch Bluebeam once the installation is finished.



7. Enter your GCM email address and click "Next".



## Notes

- If you do not have a license, you must first accept the invitation email from Bluebeam.

Revision #1

Created 2026-06-03 11:59:40 UTC by Ouellette, Marc-André maouellette@gcmconsultants.com

Updated 2026-06-03 11:59:40 UTC by Ouellette, Marc-André maouellette@gcmconsultants.com