

# Bluebeam 21 - Open with



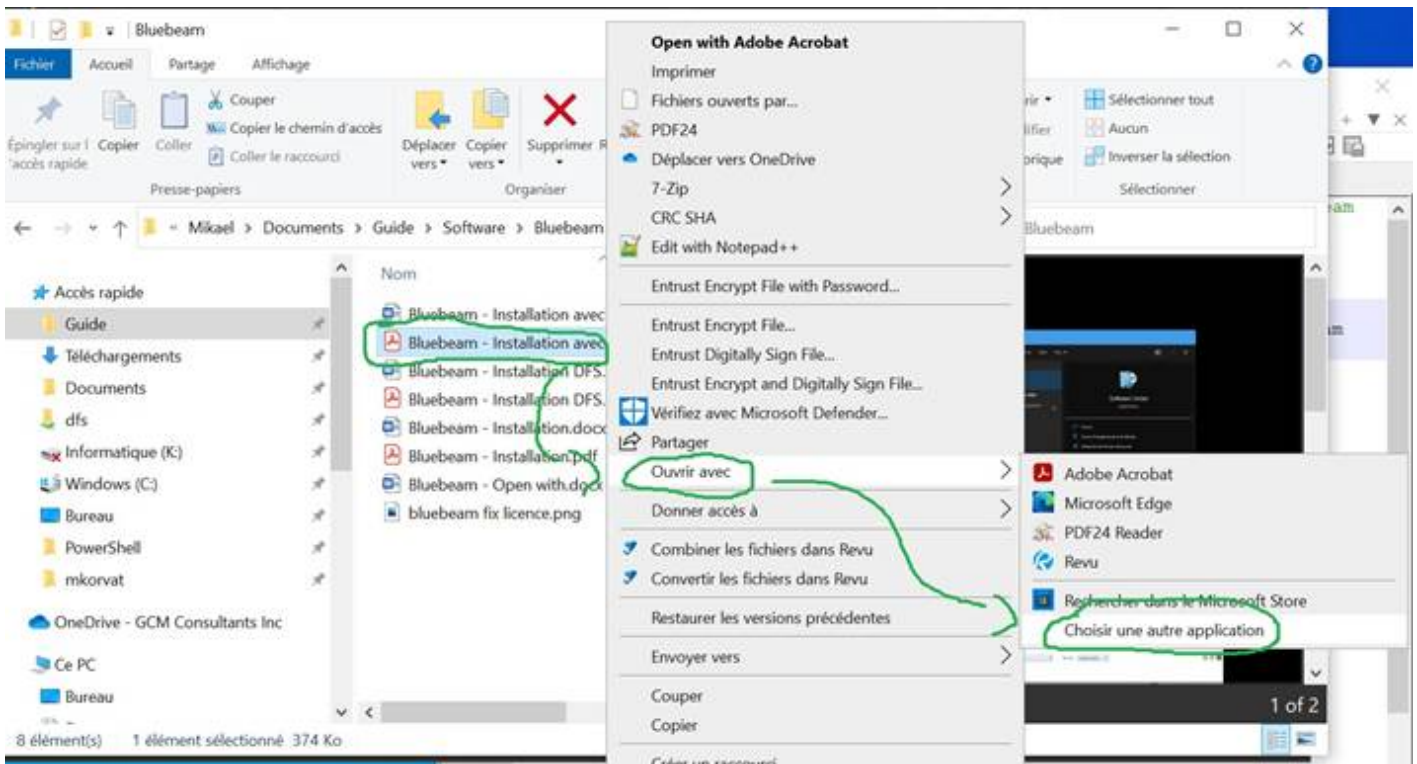
## Object: Set Bluebeam Revu 21 as the Default PDF Application

### Description

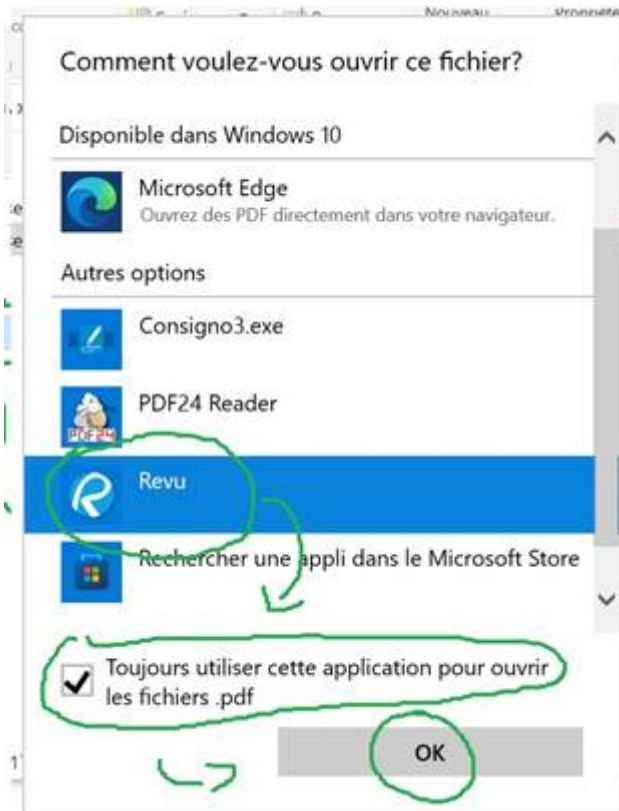
This guide explains how to configure Windows to always open PDF files using Bluebeam Revu 21.

### Steps

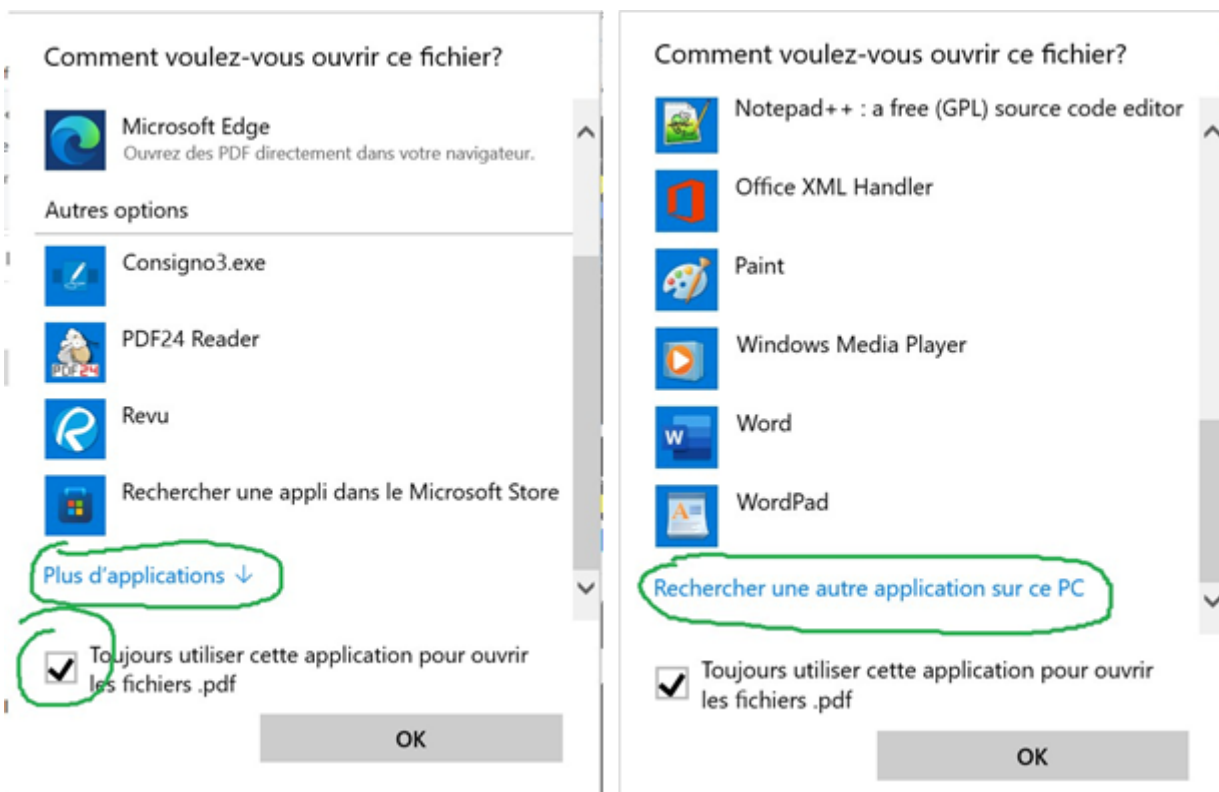
1. Right-click on a PDF file, select **Open with**, and then click **Choose another application**.



2. Click on **Revu** in the list of programs.
3. Check the box **Always use this application to open .pdf files**.
4. Click **OK**.



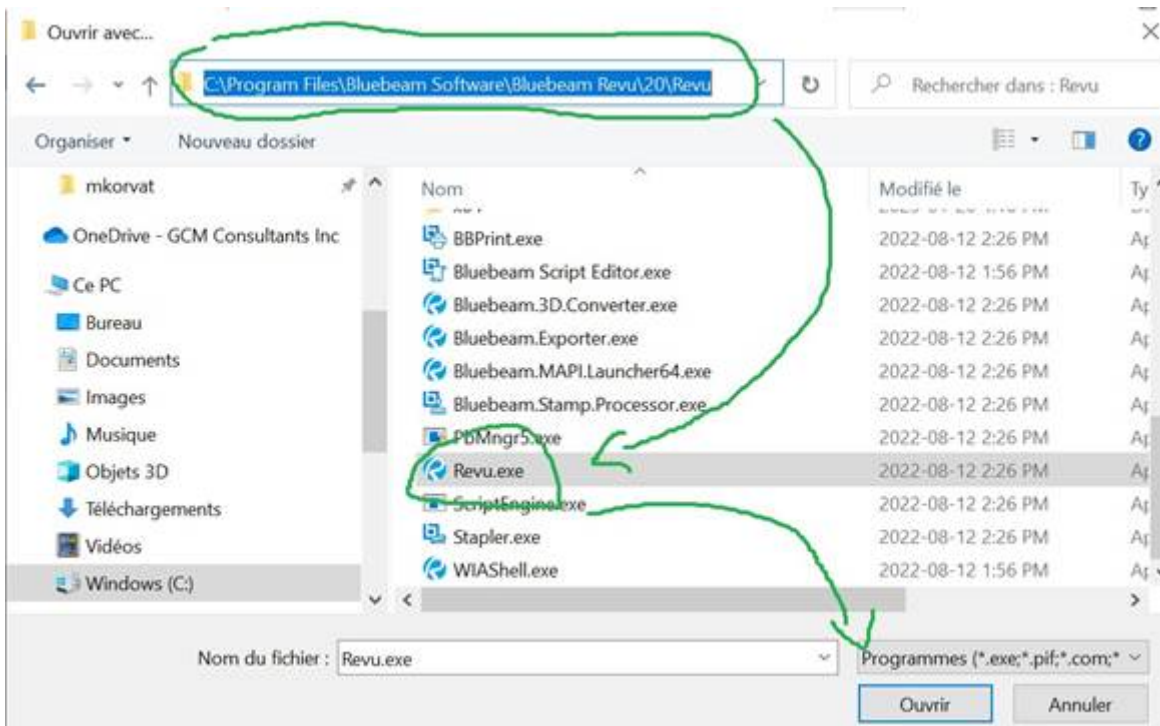
5. If **Revu** is not in the list, check the box **Always use this application to open .pdf files**.
6. Scroll down and click **More applications**.
7. At the bottom of the menu, click **Search for another application on this PC**.



8. Copy the following path: **C:\Program Files\Bluebeam Software\Bluebeam Revu\21\Revu**
9. Paste the path into the address bar of the window that opens and press **Enter**.

10. Click on the **Revu** application.

11. Click **Open**.



Revision #1

Created 2026-06-03 11:58:39 UTC by Ouellette, Marc-André maouellette@gcmconsultants.com

Updated 2026-06-03 11:58:39 UTC by Ouellette, Marc-André maouellette@gcmconsultants.com